

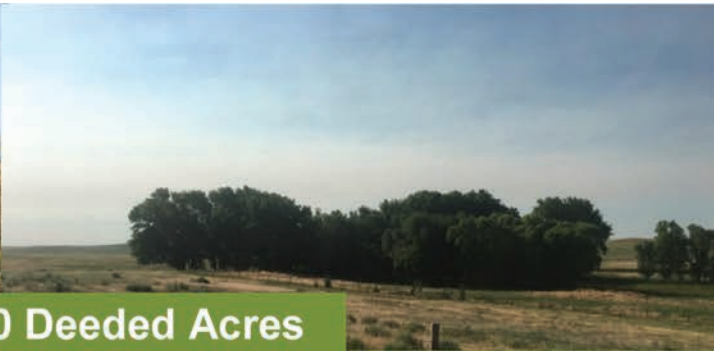
RANGE BEEF COW SYMPOSIUM



XXVI
Nov. 18-20, 2019
MITCHELL, NE

Moving Science into Practice

PHOTO BY LINDA TEAHON



1 Block - 15,300 Deeded Acres
- THE FLAG RANCH | SIOUX COUNTY NE -



15,300 All Deeded Acres w/1100 Acres of Sub Irrigated Meadows
Heart of Cattle Country - Hard Grass Lands & Abundant Water
- THE Lowest Property Taxes in Nebraska -

HENDERSON FARM | MITCHELL NE

262 +/- Acres w/90 irrigated farmland
102 irrigated pasture & 70 dryland
740ft² 2 bed & 2 bath Cabin

Outstanding Waterfowl Hunting
Live water/Spotted Trail Creek
Listing Price - \$585,000

JOHNSON RANCH | VETERAN WY

543 +/- Acres w/214 under Pivot
Home & detached garage
300 head feedlot & 36' x 48' Shop
Listing Price - \$1,300,000



Premier
Properties

307.532.4447

Premier@wyo-realestate.com
www.wyo-realestate.com
1942 East D Street - Torrington, WY

SABRINA "BREE" POPPE

Publisher
Cell: (605) 639-0356 Office: (877) 347-9126
spoppe@tsln-fre.com

DENNIA GINKENS

General Manager of Sales & Marketing & Fieldman
(406) 670-9839 | dginkens@tsln-fre.com

EDITORIAL DEPARTMENT

CARRIE STADHEIM

Editor | (605) 670-9839 | cstadheim@tsln-fre.com

MARIA TIBBETS

Digital & Sections Editor | (605) 484-4488 | mtibbets@tsln-fre.com

LIZ BANMAN MUNSTERTEIGER

Digital Engagement Editor | marketing@tsln-fre.com

MICHELLE GAILHAC

Graphic Designer

ADVERTISING

DIANNA PALMER

Special Projects Coordinator & Account Manager
SD-N. of I-90, West of the River | (877) 347-9112 | dpalmer@tsln-fre.com

SUSAN CABLE

Account Manager | SD-S. of I-90, Rosebud East Territory
(888) 648-4449 | scable@tsln-fre.com

KRISTEN SCHURR

Wyoming & Montana Territory Account Manager
(406) 498-6022 | kschurr@tsln-fre.com

LEAH BRENCE

Commercial Advertising Dept. Assistant &
East River Territory Account Manager | 406-839-1097

CARISSA LEE

Cattle Marketing Assistant & Nebraska Territory Account Manager
(877) 347-9114 | cleee@tsln-fre.com

GAYDAWN ROGERS

Nebraska Account Manager | (970) 301-2190
grogers@thefencepost.com

MARY ROBERTS

Greeley/Fort Collins Account Manager
(970) 301-2192 | mroberts@thefencepost.com

CHRISTINE MCGEE

Southeastern & Western Colorado | (970) 301-2191

VALERIE RODRIGUEZ

Northern Colorado West/Foothills | (970) 590-0412
vrodriguez@thefencepost.com

KIT WEST

Wyoming | (307) 331-0357 | kwest@thefencepost.com

FIELD SERVICE & RINGMEN

SCOTT DIRK

Director of Field Services and Ringman
West of the River ND & SD Territory | 605-380-6024 | sdirk@tsln-fre.com

DAN PIROUTTEK

Field Service & Ringman | 605-544-3316 | dpiroutek@tsln-fre.com

MATT WZNICK

Field Service & Ringman | Montana & Wyoming Territory
406-489-2414 | mwznick@tsln-fre.com

DREW FELLER

Field Service & Ringman | Colorado & Nebraska Territory
402-841-4215 | dfeller@tsln-fre.com

CLASSIFIEDS

Main Line: (877) 347-9122 | classifieds@tsln-fre.com

SUBSCRIPTIONS: 1 (877) 347-9100

Copyright 2019. All rights reserved.

Errors: The Tri-State Livestock News & The Fence Post shall be responsible for error or omissions in connection with an advertisement only to the extent of the space covered by the error. Opinions stated in letters or signed columns do not necessarily reflect the official opinion of Tri-State Livestock News & The Fence Post.



Contents

- 2 RBCS Event Schedule**
- 4 The Tradition Continues**
- 7 Bullpen Sessions**
- 8 Live Demonstrations**
- 10 Starting Off the Next 25 years**
- 11 BQA Event Schedule**
- 12 Guest Speakers**
- 23 Vendors**
- 26 Market Outlook**

Range Beef Cow Symposium XXVI

November 18-20, 2019

MONDAY, NOV. 18

MONDAY, NOV. 18		
Scotts Bluff Co Fairgrounds, Mitchell, Nebraska		
1 p.m.	BQA certification	BQA coordinators
After BQA	Ron Gill Stockmanship Clinic	Ron Gill

TUESDAY, NOV. 19

TUESDAY, NOV. 19		
Scotts Bluff Co Fairgrounds, Mitchell, Nebraska <i>Tuesday Morning Ramrod - Dr. Clint Kerhbiel, UNL</i>		
8:45 a.m.	Welcome/Housekeeping	Karla Wilke
9 a.m.	Underutilization Tech	Ken Olson
9:30 a.m.	Implementing Profitable Reproductive Technologies	Julie Walker
10 a.m.	AI-When does it pay?	John Hall
10:30 a.m.	BREAK	
11 a.m.	Benefits of crossbreeding in the commercial field	Benton Glaze
11:30 a.m.	Alternative meats and alternative statistics: What do the data say?	Dr. Alison Van Eenennaam
12:15 p.m.	LUNCH <i>Tuesday Afternoon Ramrod - Dr. Terry Engle, CSU</i>	
1:30 p.m.	BREAKOUT SESSIONS	
	How to take, preserve and ship samples for DNA, BVD, or pregnancy testing	Kelly Heath, DVM
	Feed samples and reading feed analysis and mineral tags	Janna Block
	Cowpie-ology: Does NUTBAL work?	Adele Harty & Jay Jenkins
	Visit Vendors	
3 p.m.	BREAK	
3:30 p.m.	Marketing Outlook	Jim Robb
4:10 p.m.	The Future of Your Ranch, the Future of Your Vision	Bethany Johnston
4:40 p.m.	How the RA Brown Ranch stayed in the family	Donnell and Kelli Brown
6:30 p.m.	Dinner and Bullpen sessions at the Gering Civic Center, 1050 M St. Gering, Neb.	

WEDNESDAY, NOV. 20

WEDNESDAY, NOV. 20		
Scotts Bluff Co Fairgrounds, Mitchell, Nebraska <i>Wednesday Morning Ramrod - Dr. Steve Paisley, UW</i>		
8:20 a.m.	Trade Update	Greg Ibach
9 a.m.	Cow Lease - Cash vs. Shares - Determining what is fair	Aaron Berger
9:30 a.m.	Adding value to our product: Cow/calf, feedlot & meat science perspectives	Britton Blair, Gary Darnall, Paul Dykstra, Amanda Blair

10 a.m.	BREAK	
10:30 a.m.	Hedging, marketing, risk management, who to talk to	Wacey Kirkpatrick
11:00 a.m.	Utilizing technology to better understand cattle grazing dynamics	Mitch Stephenson
11:30 a.m.	Ways to dare to be different	Vern Terrell
12 p.m.	LUNCH <i>Wednesday Afternoon Ramrod - Dr. Ken Olson, SDSU</i>	
1:15 p.m.	PAP EPDs for cow/calf producers	Scott Speidel
1:45 p.m.	Maternal influences on the calf rumen microbiome and subsequent impacts on performance and efficiency	Hannah Cunningham
2:15 p.m.	Colostrum, vaccines and setting up the newborn for success	Brian Vander Ley
2:45 p.m.	Demonstration: Using dogs to move cattle	Juan Reyes
4 p.m.	BREAK OUT SESSIONS	
	ET demo, recips as a profit center live demo of good recips	Jaclyn Wilson & Scott Lake
	Correcting malpresentation at calving	Dr. Caitlin Wiley
	Do your homework before the bull sale starts: EPDs, goals, and how does he look?	Caleb Boardman
	Visit Vendors	
6:20 p.m.	Done	
7 p.m.	Dinner and Bullpen sessions at the Gering Civic Center, 1050 M St. Gering, Neb.	

(Agenda Subject to Change)



RESULTS BY THE BARREL®

Less can actually be more.

We'll state the obvious – you could use a head start.

CRYSTALIX® Blueprint® is a premium organic trace mineral nutritional program designed to unlock the genetic potential of livestock. Blueprint products are formulated with Bioplex® organic trace minerals, which are better absorbed, stored and utilized by the animal, helping to meet the increased nutrient needs of today's cattle. This results in optimal reproductive performance and animal health, while reducing excessive mineral excretion.

Blueprint

Bioplex® is a registered trademark of Alltech.

- Benefits of Blueprint:**
- Features exclusively Bioplex organic trace minerals
 - Blueprint research supports enhanced beef cow-calf immunity and fertility
 - Research trials have shown an average of 24 lb. increase in weaning weights



Visit hubbardfeeds.com to find your local dealer.



blueprintbythebarrel.com
800-727-2502

The Tradition Continues

BY KARLA WILKE

Cow/Calf Stocker Specialist University of Nebraska

Great educational programming has been at the heart of the last 25 Range Beef Cow Symposiums. While the format is changing slightly this year, there will still be plenty of traditional-style presentations with lots of research-based information as well as producer experiences to be shared with the audience.



REPRODUCTIVE TECHNOLOGY

In keeping with the theme of Moving Science into Practice, Dr. John Hall from the University of Idaho will present on Artificial Insemination: When does it pay? Dr. Hall will address factors to consider such as herd size, goals for the operation, facilities available, and much more. Additionally, Dr. Benton Glaze, also from the University of Idaho, will discuss breed complementarity vs. hybrid vigor. Crossbreeding can certainly improve weaning weights and immunity but how does a producer choose the right breeds to cross to maximize the end product of their goals? Dr. Julie Walker from South Dakota State University will be sharing research results on implementing profitable reproductive strategies.

FINANCIAL OPTIONS – THIS BUSINESS ISN'T CHEAP

Buying the land and buying the cows sure can result in a large capital outlay. Aaron Berger from the University of Nebraska will discuss the difference in cow leases and cow shares and how to make an agreement that is fair to everyone.

Besides taking what is offered at the local sale barn, how can producers leverage their cattle? Wacey Kirkpatrick, a rancher from Midland, South Dakota will present on Hedging, marketing, risk management – who do you talk to?

MARKET OUTLOOK

What would RBCS be without Jim Robb from the Livestock Marketing Information Center presenting information on the factors which could play into the future markets of the cattle business? As in years past, this information will include market trends, competing protein market projections, buying decisions of the consumer and more.

RANCH TRANSITION

If the future of the ranch is important, this will be the RBCS to attend. Bethany Johnston from the Nebraska Grazing Coalition and Donnell Brown from the RA Brown in Throckmorton, TX will be discussing how to get in the business, how to transition the business, and how to keep it in the family.

FAKE MEAT??

How did the Impossible Burger become possible? Dr. Alison Van Eenennaam from the University of California – Davis is coming to present Alternative Meats and alternative statistics. What do the data say?

PRODUCER EXPERIENCES – ADDING VALUE AND STEPPING OUT OF THE BOX

Producers sharing their experiences is always one of the most highly rated presentations on the program. This year a producer panel including a cow/calf producer, a feedlot producer, and a meat scientist will discuss how to add value to the end product. Amanda and Britton Blair from South Dakota, along with Gary Darnall from Nebraska will discuss these options.

Vern Terrell has tried a lot of different things on his operation from weaning strategies, to cull cow management, and even multispecies grazing. Daring to be different just might be what makes the operation profitable for another generation.



Buffalo
BRAND SEED
GREELEY, COLORADO

Proud supplier of Dairyland Alfalfa
Hybri-Force 3430-HiGest
Hybri-Force 3420 Wet
Hybri-Force 3400
Hybri-Force 2600
Magnum 8
Magnum 7
Magnum Salt
Many more Alfalfa varieties available.

101 East 4th St. Road, Greeley CO
800-421-4234
www.buffalobrandseed.com



HIGH ALTITUDE DISEASE AND THE COW/CALF PRODUCER

Dr. Scott Speidel from Colorado State University will be discussing recent data on expected progeny differences (EPD) for the cow/calf producer trying to reduce the risk of high altitude disease in their herd.

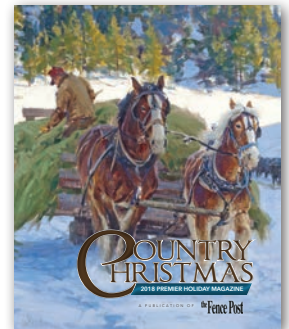
SETTING UP THE NEWBORN FOR SUCCESS – WHEN DOES IT START?

Dr. Hannah Cunningham from the University of Wyoming will be discussing maternal influences on the calf rumen microbiome and how that subsequently impacts calf performance. Dr. Brian Vander Ley of the Great Plains Veterinary Center in Clay Center, NE will be discussing colostrum, vaccines, and setting the newborn up for successful weaning.



the Fence Post

SAMPLE OF OUR FENCE POST & SPECIAL EDITIONS:



Since 1980, The Fence Post has been revered as a trusted source for ag news and information. We don't cover a certain city, county or geography. Rather we celebrate the farming and ranching culture, our western way of life, and the great folks within it. Our unique content spans from livestock production and grain farming to ag legislation and water policies, to stories about the region's ranchers, farmers, and events in our ag community. You'll also find regular comics, columnists, obituaries and the auction and event calendars in every issue. So, grab a cup of coffee and settle in to enjoy this week's issue. And thanks for reading us!

Try it FREE for 4 weeks.

Give us a call or drop us a line, we'll start your complimentary trial subscription right away!

Toll Free (800) 275.5646 // Local (970) 392.4426 // circulation@thefencepost.com

EST. 1980

the Fence Post

THEFENCEPOST.COM

Facebook Twitter Instagram

Your Trusted Source for Ag News & Information

Bullpen sessions offer producers individual, specific insight

BY KARLA WILKE

Cow/Calf Stocker Specialist, University of Nebraska

Probably the one thing that sets the Range Beef Cow Symposium apart from any other conference is the bullpen sessions. In baseball a bullpen session is a time when the pitcher works on pitching mechanics and grips and tries out any new techniques they are interested in using. This is exactly what the bullpen sessions are designed for in cattle production as well.

The speakers from the day are divided into groups of three to four, usually along a topic line, and producers can go into that session and ask questions and participate in the ensuing discussions. These are great opportunities to get more specific questions answered, debate

methodology, and learn about past experiences of others in the discussion group.

Bullpen sessions will be at the Gering Civic Center at 1050 M St., Gering, Nebraska on Tuesday and Wednesday November 19 and 20. After the conclusion of the day's events at the fairgrounds in Mitchell, Nebraska, participants can choose to purchase a dinner plate at the Gering Civic Center and already be on site for the bullpen sessions.

Plan to attend Range Beef Cow Symposium XXVI November 18-20 in Mitchell, Neb. and be sure to participate in the bullpen sessions November 19 and 20 in Gering, Neb.



PHOTO BY RUTH WEICHMANN

Live Demonstrations

BY KARLA WILKE

Cow/Calf Stocker Specialist, University of Nebraska

One of the changes the Range Beef Cow Symposium (RBCS) committee decided to make this year was to add some live demonstrations to the program.

Juan Reyes of Wheatland, Wyo. will be demonstrating how to move cattle with dogs. Juan and his family are the owners and operators of MR Angus which has been recognized by BEEF magazine as a Top 100 Seedstock Operation. Juan believes his dogs must prove themselves on the ranch and his dogs work in wide open spaces as well as confinement with yearlings, pairs, and bulls. Juan's dog JR Red won the inaugural National Cowdog Association's Hall of Fame for Dogs award in 2018.

Another planned demonstration will involve embryo transfer by Dr. Scott Lake of University of Wyoming coupled with a presentation by Jaclyn Wilson of Flying Diamond Genetics and the Wilson Ranch near Lakeside, Nebraska on what makes a good recipient cow and how to manage her. Embryo transfer (ET) is a great tool for rapidly improving genetic traits in purebred herds. The commercial producer however, may find a niche in providing recipient cows for the ET practice.

Everyone hates to have to assist a cow at calving, but when it has to be done, minimizing stress to the cow and delivering a live calf are crucial. Dr. Caitlin Wiley Messerschmidt from Iowa State University will bring a cow model and demonstrate how to assist the cow and correct malpresentations for the best outcome for both cow and calf.

Can you look at a bale of hay and know its nutrient value? Can you look at a bull and know whether he will produce low birth weight calves or calves that grade choice? Two of the

planned demonstrations will involve evaluating hay bales and reading a nutrient analysis and looking at bulls and matching them with their expected progeny differences (EPD). This will include discussion about how to do homework on bulls before arriving at the bull sale. Dr. Janna Block of North Dakota State and Caleb Boardman from the University of Wyoming are planning great demonstrations with prizes for participants.

Technology for determining pregnancy from blood samples, DNA verification, and BVD detection exist for the rancher. How do you obtain those samples? How should they be stored? How do you prepare them for shipping and where do you send them? Dr. Kelly Heath from the University of Nebraska will be showing producers how to collect, handle, and ship biological samples.

Additionally, a presentation will be held on the data behind using fecal matter to determine nutrient quality of forage. Does manure indicate supplement needs? Adele Harty from South Dakota State and Jay Jenkins from the University of Nebraska have collected and compiled several years of data on using fecal material to evaluate forage quality.

The RBCS committee is very excited about this change in program format. Because the theme this year is Moving Science into Practice, the committee felt very strongly about incorporating demonstrations on how to utilize science better into the program.

To find out more about the 2019 RBCS XXVI please visit beef.unl.edu/range-beef-cow-symposium or register at www.regonline.com/RBCS2019. We hope to see you there!



- Published Weekly
- Livestock Market Reports & Directory
- Industry News & Feature Stories
- Event & Sale Calendars
- Livestock & Equine Event Coverage
- Production Sale Reports
- Professional Ring Service

- Catalog & Flyer Printing
- Audited & Verified Circulation
- Classified Advertising
- Special Editions & Feature Sections
- Find us online at www.tsln.com
- Professional Livestock Photography & Videography Available

TRI-STATE LIVESTOCK NEWS

Call or email for a free 4-week subscription // 877.347.9100 // 605.723.7001 // www.tsln.com
subscriptions@tsln-fre.com   

Starting off the Next 25 Years

BY KARLA WILKE

Cow/Calf Stocker Specialist University of Nebraska

In response to a survey of past participants, the Range Beef Cow Symposium (RBCS) committee has altered the format to include more demonstration-type presentations. This year RBCS will be in Mitchell, Nebraska, Nov. 18-20 at the Scott Bluff County fairgrounds. The event will kick off Monday, Nov. 18 at 1 p.m. (MST) with beef quality assurance (BQA) training and certification. Beef cattle producers have historically been concerned about animal welfare and well-being. However, according to the National Cattlemen's Beef Association, a study conducted by Colorado State University has indicated there is also a monetary benefit when selling calves that have been raised by BQA-certified operations. In that study, CSU reviewed over 8,800 video lots of cattle sold between 2010 and 2017. They noted a \$16.80/head premium when BQA certification was indicated.

Beef quality assurance training is more than just needle placement and vaccine handling, although those things are critically important to the well-being of the animal and the quality of the end product. In addition to proper handling and administration of medication, the BQA training November 18 will also include topics such as record keeping, feeding and the veterinary feed directive, employee training and biosecurity.

Additional topics will include trailer safety, loading recommendations, transport, and even euthanasia and disposal when necessary. This portion of the program will be taught by Dr.

Steve Paisley (UW), Libby Bigler (CSU), Heidi Carroll (SDSU), and Rob Eirich (UNL).

The afternoon will be rounded out with a live demonstration of proper stockmanship handling for processing and branding conducted by Dr. Ron Gill from Texas AgriLife Extension. Dr. Gill has provided expertise on nutrition, management and handling to cattle producers for over 20 years. In addition to his role as a professor for Texas A&M, he and his wife Debbie operate a commercial cattle enterprise in North Central Texas. Dr. Gill will be sharing the four principles of cattle behavior as well as the 10 keys to effective cattle handling.



**Range Beef Cow Symposium XXVI
BQA Event - Monday, Nov. 18
1:30 p.m. - 6:30 p.m.**

Scotts Bluff County Fairgrounds, Mitchell, Nebraska

1:00 - 1:30

Registration - \$20

1:30 - 2:00

BQA Introduction

Importance, NBQA Finding, VCPR, Record Keeping, Feeding and VFD,
Employee Safety and Training, and Biosecurity

2:00 - 4:00

BQA Rotation (30 mins Each)

Chute Side

Proper Injection Site, Proper Injection Technique (Syringes), Proper Implanting
and Handling Implants

Trailer Walk Around-New and Possibly Used

Gross Weights and Ratings, Tools Onboard, Trailer Inspection Safety and Operation,
Loading Recommendations Bumper Stickers

Animal Health Product Handling and Storage (Refrigerator and Coolers)

Proper Temperatures and Direct Sunlight (Vaccines & Antimicrobials), Cooler Types (CattleVac, Homemade, Merck, Etc),
Mixing and Handling Vaccines (Read Label Instructions), Modified Live Product (Use: 1 hr, not carried over), BQA Thermometers

Fitness for Transport and Euthanasia

Compromised Animals Evaluation and Movement, Protocol, Proper Location, and Equipment,
Handling of Euthanized & Disposal, Posters

4:00 - 6:00

Stockmanship Demo (Live Cattle) Processing and Branding

Sorting, Rope/Drag Wrestling, and Processing Alley and Chutes

Don't antagonize me.

**Antagonists are impossible to avoid in your operation-
from water, to feed, to forages-
and your trace mineral program could be making it worse.**

Sulfate trace minerals easily separate and bind to antagonists, reducing the amount of minerals available for absorption, interfering with digestion and even reacting with other feed ingredients.

IntelliBond® hydroxy trace minerals work differently, dissolving more slowly in the digestive process for minimal binding with antagonists an absorption at the optimal point in digestion.

Discover the benefits of switching your trace minerals to IntelliBond®
at www.micro.net

**Smart minerals, smart nutrition...
smart decision**

 **IntelliBond®**
a Selko product www.micro.net
(317) 486-5880



Monday Speakers



LIBBY BIGLER

Libby Bigler works for Colorado State University's (CSU) Department of Animal Sciences as the Colorado Beef Quality Assurance (BQA) Coordinator. She graduated

from CSU in 2011 with a B.S. in Animal Sciences and a B.A. in Journalism and Technical Communications. Prior to joining CSU in 2015, Libby worked for the National Cattlemen's Beef Association as part of the membership team and she also spent time in Houston, Texas as the Youth Activities and Communications Director for the American Brahman Breeders Association. She currently resides in Johnstown, Colorado with her husband, Bo and daughter, Paige.



HEIDI CARROLL

Heidi supports the citizens of South Dakota in her role as the SDSU Extension Livestock Stewardship Field Specialist & Beef Quality Assurance Coordinator at the South

Dakota State University campus in Brookings. She is originally from Minnesota and completed her bachelor and master degrees at SDSU in Animal Science with an emphasis in ruminant nutrition. She also spent a year teaching English in Beijing, China at China Agricultural University. Heidi's extension role focuses on assisting producers to meet the expectations for the quality assurance programs for all livestock species, conducts livestock handling trainings, and raises awareness of consumer perceptions of animal care practices.



ROB ELRICH

Rob Eirich is the Nebraska Director of Beef Quality Assurance and Extension Educator with the University of Nebraska-Lincoln Animal Science Department based in

Scottsbluff, Nebraska and has spent more than 15 years of his career with Nebraska Extension. He has a Bachelors in Agriculture Economics from the University of Wyoming and a Masters of Agriculture Leadership and Education from University of Nebraska-Lincoln; both degrees involved focus in Animal Science. Prior to his current position, Rob taught Animal Science and coached the Livestock Judging Team at Eastern Wyoming College in Torrington, Wyoming and worked in Nebraska Extension with Agriculture, 4-H and Youth Development throughout the Nebraska Panhandle. His two older brothers operate their family's diversified farming/ranching operation near Bayard, Nebraska. Rob is committed to working with the agriculture community statewide and nationally to ensure quality, safe, wholesome food products and build consumer confidence in today food production system. Rob is also an advocate for agriculture, believing that we must all tell the story of agriculture even if it is one person at a time.



DR. RON GILL

Dr. Ron Gill is professor and Extension livestock specialist for Texas A&M AgriLife Extension and also serves as Associate Department Head and Program Leader

for Extension animal science faculty in the Department of Animal Science at Texas A&M University. He earned his bachelor's and

master's degrees from Angelo State University, San Angelo, Texas and his doctorate from Texas A&M University. He has worked for Texas A&M AgriLife Extension for 35 years. He provides leadership in Extension programming related to animal well-being and low-stress livestock handling and assists in providing leadership to statewide programming efforts for Beef Safety and Quality Assurance programming. He was recognized in 2018 for his efforts across the nation in BQA when he received the BQA Educator Award from NCBA. He works with NCBA to deliver the Stockmanship and Stewardship program across North America, and he also serves as a member of the TSCRA and NCBA Cattle Health and Well-Being Committee and serves on the NCBA Animal Health Advisory Committee. He and his wife also operate Gill Cattle Company, a 300 head commercial cow operation in North Central Texas.



DR. STEVE PAISLEY

Dr. Paisley was raised on a cattle ranch near Oshkosh, Nebraska. He received both his B.S. and M.S. degrees in Animal Science from the University of Wyoming. Steve

received his Ph.D in Animal Nutrition from Oklahoma State University and was initially hired by Kansas State University as the South Central Area Livestock Specialist. In 2001 Steve joined the University of Wyoming Department of Animal Science as the State Extension Beef Cattle Specialist. In the fall of 2007, Steve and his family relocated, with Steve stationed at UW-SAREC (Sustainable Agriculture Research and Extension Center) research farm near Lingle, WY, where he is the current director. Steve, his wife Carrie, and their three children Ty, Todd and Hadley Jane live north of Wheatland, WY on a centennial ranch that has been owned and operated by his wife's family since 1888.



located at
PRODUCERS
PRODUCERS LIVESTOCK MARKETING ASSOCIATION

711 O Street
 Greeley, Colorado

*Financing &
 Delivery Available*

**PROUD TO BE THE NEW ELITE TRAILER DEALER
 IN NORTHERN COLORADO**

"The Elite Aluminum Stock Trailer is the Most Versatile Trailer on the Market Today"



ELITE TRAILERS

Full Service Trailer Repair Shop
www.pinnacletrailersales.com • Sales-970-219-5699



3005 Nationway - Cheyenne, WY
(307) 514-5021
FrontierOutdoorPower.com
AUTHORIZED DEALER







Are You Ready 

HINIKER
Snowplows

For SNOW?

Tuesday Speakers



DONNELL BROWN

The R.A. Brown Ranch is a progressive family ranching business that has been producing some of the most superior cattle and Quarter Horses in the industry since 1895. They raise and sell four breeds of cattle: Angus, Red Angus, SimAngus, and Hotlander (a four breed composite developed on the ranch in the late '80s). Extensive records are maintained on over 1,000 head of seedstock cows. Since 1974, they have held their annual production sale on the 2nd Wednesday in October at the ranch in Throckmorton, TX. Originally established by R.H. Brown, it is now in its 5th generation, owned and operated by Donnell and Kelli Brown. Their mission statement is as follows: We are continually striving to improve the efficiency of converting God's forage into safe, nutritious, and great tasting beef to better feed His people.



DR. ALISON VAN EENENNAAM

Dr. Alison Van Eenennaam is a Cooperative Extension Specialist in the field of Animal Genomics and Biotechnology in the Department of Animal Science at University of California, Davis. She received a Bachelor of Agricultural Science from the University of Melbourne in Australia, and both an MS in Animal Science, and a PhD in Genetics from UC Davis. Her publicly-funded research and outreach program focuses on the use of animal genomics and biotechnology in livestock production systems. Her current research projects include the development of genome editing approaches for cattle. She serves as

the bovine genome coordinator for the USDA National Animal Genome Research Program, served as a member of the National Academies of Sciences, Engineering and Medicine (NASSEM) Study Committee for "Science Breakthroughs 2030: A Strategy for Food and Agricultural Research", and is an elected Fellow and current chair of the American Association for the Advancement of Science (AAAS) Agriculture, Food, and Renewable Resources Section O. She has given over 630 invited presentations to audiences globally, and uses a variety of media to inform general public audiences about science and technology. She frequently provides a credentialed voice on controversial scientific topics, and has appeared on national media including The Dr Oz Show, NPR, Science Friday, and the Intelligence Squared debate series. She appeared in the 2017 documentary "Food Evolution" narrated by science-communicator Dr. Neil deGrasse Tyson. A passionate advocate of science, Dr. Van Eenennaam was the recipient of the Association of Public and Land-grant Universities (APLU) 2010 National Award for Excellence in Extension, American Society of Animal Science (ASAS) 2014 National Extension Award, the Council for Agricultural Science and Technology (CAST) 2014 Borlaug Communication Award, University of California – Davis 2019 James H. Meyer Distinguished Career Achievement Award, and ASAS 2019 Rockefeller Prentice Award in Animal Breeding and Genetics.





J. BENTON GLAZE, JR.

Benton Glaze is an Extension Beef Cattle Specialist in the Department of Animal & Veterinary Science at the University of Idaho. He is stationed and works out of

the Twin Falls Research & Extension Center in Twin Falls, Idaho. Originally from Muleshoe, Texas, Glaze received a B.S. degree in animal science from Tarleton State University and M.S. and Ph.D. degrees in beef cattle breeding and genetics from the University of Missouri and Kansas State University, respectively. Glaze coordinates beef Extension programming throughout the state and serves as a resource for stakeholders including beef producers, allied industries representatives, veterinarians, Extension educators and the general public. His Extension program focuses on breeding and genetics, general management, reproduction, and beef quality assurance.



JOHN B. HALL

Dr. Hall received his B.S.A. and M.S. in Animal Science from the University of Georgia. He obtained his Ph.D. in Animal Science (Reproductive Physiology) from the

University of Kentucky in 1991. Currently, he is Professor and Extension Beef Cattle Specialist located at the University of Idaho Nancy M. Cummings Research, Extension, and Education Center where he also serves as the station Superintendent. Prior to coming to Idaho, Dr. Hall was on faculty at the University of Minnesota and Virginia Tech. He conducts research and extension programs on beef reproduction and beef cow-calf systems. His particular interests are in estrus synchronization systems, use of gender selected semen, heifer development, nutrition reproduction interactions, and utilization of forages. John is a seventh generation agriculturalist, and resides

in Carmen, ID with his wife, Beverly. They have two adult sons.



ADELE HARTY

Adele Harty, Cow/Calf Field Specialist has been with SDSU Extension for 14 years and is based in western South Dakota. Growing up on a ranch in eastern Colorado is

where her passion for beef cattle and nutrition began and she continues to pursue that passion with her husband and children on their small cow/calf operation north of Philip. She attended Oklahoma State University for her Bachelor's degree in Animal Science with a Business Option. From there she attended North Dakota State University for her Master's degree in Ruminant Nutrition. Adele's current programming focuses on beef production systems, cattle mineral nutrition and farm stress management. Adele will be sharing results from a research project in South Dakota focused on fecal NIRS and NUTBAL.



KELLY D. HEATH

Kelly is Nebraska native from Custer County and a first-generation college graduate. He has a bachelor's degree in Animal Science from the University of Nebraska-

Lincoln, and received his Doctor of Veterinary Medicine degree from Iowa State University. The position of Attending Veterinarian in a research facility requires a multidisciplinary approach to facility management. Sixteen years of clinical practice experience has provided him with solid clinical skills including surgery, pathology, therapeutics and preventive medicine. experience provided the necessary breadth and depth of knowledge of multiple species as well as population medicine skills critical to successful execution of the role. Kelly also has worked in the biopharmaceutical

industry for 8 years gaining valuable knowledge into government regulations, Good Laboratory Practice, Good Clinical Practice, and corporate and regulatory quality compliance programs. During this time in industry he was the Attending Veterinarian and Clinical Research Manager for a clinical research facility and filled the role of Animal Welfare Officer for the Americas. His responsibilities were to manage research projects with respect to scientific rigor and excellence, animal care, animal welfare, budgets, technology and infrastructure development. Additional responsibilities as the Animal Welfare Officer included auditing both internal and external animal research facilities to ensure compliance to the highest animal welfare standards. In summary, Kelly has a demonstrated record of relevant experience and solid clinical skills that have been a valuable asset to the Life Sciences Research efforts at the University of Nebraska- Lincoln. Kelly is married to Gina who works in the Lincoln Public School system as a Secure Entrance Monitor/Office Associate. They have two adult children who are both married and live in Omaha. They also love spending time with their 3 grandchildren.



JAY JENKINS

Jay Jenkins has been a Nebraska Extension Educator based in Cherry County since 2005. He came to UNL after spending six years in Washington working for

Washington State University Cooperative Extension, and ten years in his home state of Wyoming working for University of Wyoming Cooperative Extension. Jay received both his degrees from the University of Wyoming; BS General Agriculture, MS Animal Science. Jay recently began focusing on Community Vitality efforts after being focused on range livestock production for over 25 years. He has a passion for people and works to provide access to the

information and skills people need to make wise decisions that lead them toward their preferred future.



BETHANY JOHNSTON

For several years, the Nebraska Grazing Lands Coalition (NGLC) has hosted generational transition workshops for those interested in passing the farm or ranch

to the next generation. Due to the daunting task of transitioning the family farm or ranch, the NGLC hired an individual who will work directly with families interested in taking estate and transition planning steps. Through grant funds, Bethany Johnston was recently hired as the NGLC Ranch Transition Task Manager. For families interested in working with Johnston, she will offer complimentary and confidential assistance. The process begins with a face-to-face meeting with Johnston where she will utilize their input to help the family create a roadmap and identify available transition and estate planning resources. She emphasizes, “The family will be in charge of the process and the direction. They are in the driver’s seat.” Once the family’s roadmap has been developed, Johnston, who is certified as a farm succession planner, will then check-in with the family regularly to ensure that they are proactively completing tasks for effective transition and estate planning. Johnston anticipates this process will include helping direct families to several services and resources that already exist, such as Nebraska Rural Response legal and financial clinics, counseling, and family mediation. Farm and ranch families interested in transition planning are invited to contact Johnston at 308-348-2015 or ranchtransition@outlook.com, or visit <https://nebraskagrazinglands.org/Programs/Generational-Transition-Program>.



LMIC
Livestock Marketing
Information Center

JAMES G. ROBB

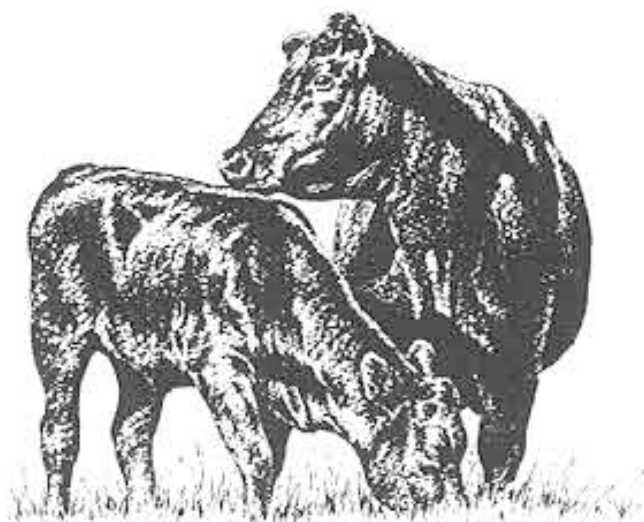
Jim Robb is a Senior Agricultural Economist at the Livestock Marketing Information Center (LMIC). Twice he has been Center Director, serving in that capacity for a total of 24 years. Currently, he has a half-time appointment. Before joining the LMIC, Jim was an Agricultural Economist at the University of Nebraska. He also has worked in the agricultural finance sector. He received degrees in Agricultural Economics from the University of California – Davis, and Michigan State University. Throughout his career, Jim has served on advisory committees and working groups for the industry, USDA agencies, academic institutions, and professional organizations. He is co-founder and President of the Foundation for Livestock and Grain Marketing, a non-profit. Jim has authored or co-authored over 1,400 articles, research reports, and newsletters on a variety of livestock marketing and economic topics. He is a regular speaker at conferences throughout North America and has given expert testimony to the U.S. Senate Agriculture Committee. The LMIC has been a Center of Excellence for over 60 years. It is a unique cooperative effort that supports market education, research, and outlook. The Center is comprised of: 26 Land Grant Universities; nine USDA agencies; and associate organizations in the U.S. and Canada.



JULIE WALKER

Beef cattle nutrition and management is the focus for Julie Walker's work at South Dakota State University as an Extension Beef Specialist. Dr. Walker will discuss

the alternative reproductive technology as it influences calving distribution, feedlot performance and ultimately impacts the financial bottom-line. Current research has been used to evaluate three management levels to determine the potential of narrowing the calving distribution through adoption of reproductive technologies which should impact the end product with a more uniform and higher-quality calf crop, obtained with limited additional resources, and that will create unique marketing opportunities. Dr. Walker received her Bachelor's degree from North Dakota State University and earned her M.S. degree at Purdue University and her Doctorate from University of Kentucky.



Wednesday Speakers



AARON BERGER

Aaron Berger is Nebraska Extension Educator serving in the southern Nebraska panhandle since 2004. He received his bachelor's degree from the University

of Nebraska and his master's degree from Colorado State University. Aaron's focus is to provide clients resources and experiences that will help them meet their goals related to forage and cattle management. He believes utilizing a systems approach to management decisions is critical to the success of ranch operations.



AMANDA BLAIR

Dr. Amanda Blair received her PhD from Purdue University in 2007 where she focused her research in the area of meat science. In the same year she joined the faculty at South

Dakota State University where she is currently a Professor in Animal Science with a research and Extension appointment. Dr. Blair's research is focused on understanding the effects of pre- and post-natal management strategies on growth, body composition and meat quality of beef cattle. Her program has been funded by the USDA, Beef Checkoff funds, and private industry. Her Extension programming is focused on connecting producers with the processing and product sides of the industry as well as enhancing consumer understanding of meat production and products.



BRITTON BLAIR

Britton Blair is from Sturgis, SD and graduated from South Dakota State University with a bachelor's degree in animal science. Britton returned to the family ranching operation

in 2010 and is a partner in Blair Brothers Angus Ranch with his father, Rich Blair, uncle, Ed Blair and cousin Chad Blair. Blair Brothers is a commercial Angus seedstock operation that markets approximately 400 Angus bulls annually. The operation also includes stocker/yearling and cattle feeding enterprises that continue to grow each year. All of the calves that enter the cattle feeding program are sired by Blair Brothers bulls and purchased through their calf buy-back program. A majority of these cattle are fed in Kansas and marketed through US Premium Beef. Blair Brothers Angus strives to breed cattle that will excel in the pasture, feedlot and on the dinner plate. Data collection is essential to the success of the operation and selection focus is placed on calving ease, maternal characteristics, adequate growth, moderate frame, efficiency, gain, and the ability to marble extremely well.

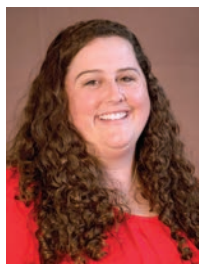


CALEB BOARDMAN

Caleb Boardman is a Lecturer and the Livestock Judging Coach at the University of Wyoming. Together with his wife Kylie and 1 1/2 year old son, Caleb also helps manage

his families cow/calf operation in Northern Wyoming. He received his B.S. in Agribusiness and M.S in Ruminant Nutrition from Texas A&M University. He was a member of the 2011 reserve national champion team and an assistant coach for the 2013 National champion team.

and an assistant coach for the 2013 National champion team. He has judged livestock shows at all levels in 18 different states.



HANNAH CUNNINGHAM

Hannah Cunningham-Hollinger is an Assistant Professor of Animal Genetics in the Department of Animal Science at the University of Wyoming. Hannah started

her faculty position in August of 2018 after finishing her Ph.D. in Animal Genetics at the University of Wyoming. She also received her M.S. in Ruminant Nutrition from the University of Wyoming in 2014 after completing a B.A. in Biology at St. Olaf College. Hannah grew up on a ranch near Kaycee, Wyoming which provided the background and interest for animal agriculture. Now, as a researcher, Hannah focuses on the rumen microbiome and investigating ways that the rumen microbiome influences host performance. She is currently trying to determine the impacts of the microbiome(s) residing in the mature cow on the developing calf's rumen microbiome, health, and performance throughout its life. Her ultimate goal is to provide information on the impact that gestational nutrition, management practices, etc. have on the developing rumen microbiome and uncover opportunities to intervene and "program" the calf microbiome to improve health and performance of the calf.



GARY DARNALL

Gary Darnall is the 4th generation on a 6 generation cattle ranch and feedlot in Banner County, Nebraska that was founded in 1889. Today the ranch runs approximately

1700 commercial Angus females bred to Sim-Angus bulls. While they keep back 300-400 replacement heifers they finish the remainder of their calf crop in their 22,500 head capacity

Certified Angus Beef feedlot. The farming operation has expanded over the years and now includes 25,000 acres of grassland, 2,400 acres of irrigated and 4,700 acres of dryland farm ground, which also provide feed for the cow/calf, yearling, and feedlot operation.

Gary and his operation have won numerous Certified Angus Beef awards over the years and in 2013 received the Beef Improvement Federation Commercial Producer Award. Gary and his wife Emilie have been married 59 years and they have two children Lisa Darnall Brenner and Lane Darnall.



PAUL DYKSTRA

Paul Dykstra is a Beef Cattle Specialist with Certified Angus Beef. From his home office in Chappell, Nebraska, Paul works closely with ranchers and feedyard managers in the

central and western U.S. to help them target the brand. He shares reports on cattle and beef market trends in the biweekly CAB Insider and provides education for ranchers and beef community partners in retail and foodservice. Paul also oversees Certified Angus Beef® brand Natural on participating farms and ranches.

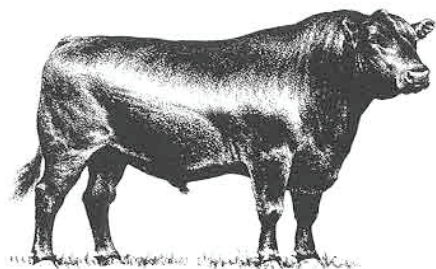


GREG IBACH

Greg Ibach of Sumner, NE was recognized as the newest University of Nebraska-Lincoln Block and Bridle honoree. Ibach, a fifth-generation farmer

and rancher, currently serves as the U.S. Department of Agriculture's Under Secretary for Marketing and Regulatory Programs where he sets national standards for the marketing of U.S. agricultural products, and the health and care of animals and plants. He began his professional career working for Farm Credit Services of America. In 1989 Ibach and his wife Teresa returned to the family farm.

They served on the Nebraska Farm Bureau Young Farmer Rancher Committee and Ibach was elected for two terms on the Nebraska Beef Council. Greg was on the Executive Committee of the National Cattlemen's Beef Association when he was appointed to be Assistant Director of Agriculture by then Governor Mike Johanns and later was appointed Director by Governors Dave Heineman and Pete Ricketts. Ibach is Nebraska's longest serving Director of Agriculture serving more than 12-years in this role.

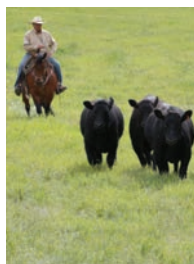


WACEY KIRKPATRICK



Wacey grew up on his family's ranch near Hayes, South Dakota. He and his wife Jamie were married in 2013 and have twin two-year-olds, Roadie and Reata. Both Wacey and

Jamie's families have been ranching and farming in South Dakota up and down both sides of the Missouri River since the early 1900s. Together they stepped out on their own and founded Kirkpatrick Cattle Company, steadily expanding their cow/calf, stocker and backgrounding enterprises. They share a deep passion of caring for the land they manage as well as the livestock under their care. They care deeply about carrying on the traditions of past generations as well as adapting their business to be able to one day pass it on to the next generation. They are very optimistic about the future of the cattle and ranching industry and the opportunities that will present themselves as time goes forward.



JUAN REYES

Juan Reyes is a first generation rancher from Wheatland, WY. He and his wife Joni started M.R. Angus in 1977 near Tie Siding, WY. Today they have expanded their operation to

include a large cowherd, irrigated pivots and a feedlot. They hold a bull sale in February every year featuring Angus bulls developed to perform in a high altitude environment.

Additionally, Juan breeds, trains, and sells Border Collie cattle dogs. Juan's dogs work on the ranch before becoming trial dogs and work on all classes of cattle including pairs, yearlings, and bulls, in wide open spaces and confinement. In 2018, Juan's dog J.R. Red was the inaugural recipient of the National Cattledog Association's Hall of Fame for dogs. Juan has traveled the country putting on low stress cattle handling demonstrations using dogs. Juan and Joni have two children, Jason and Jennifer, who along with Jennifer's husband Mick Burr help manage the ranch.



SCOTT SPEIDEL

Scott Speidel joined Colorado State University in July of 2014 as an Assistant Professor of Beef Cattle Breeding and Genetics in the Department of Animal Sciences. Scott is

a native of southern California. He received his undergraduate B.S. degree in Animal Sciences from California State University Fresno, where he spent the majority of his time working with Swine and Dairy programs. His M.S. in Animal Sciences specializing in Dairy Molecular Genetics was earned in 2001 from the University of Arizona. He received his Ph.D. in Breeding and Genetics from Colorado State University in 2011. Scott's research interests include the development of models for genetic evaluation of efficiency and adaptability traits in beef cattle.



MITCH STEPHENSON

Mitch Stephenson began his current position in 2015 as an Assistant Professor and Range and Forage Management Specialist at the University of Nebraska – Lincoln

Panhandle Research and Extension Center in Scottsbluff, NE. Stephenson received his MS in 2010 from the University of Nebraska - Lincoln where he studied the influence of different grazing strategies on vegetation and livestock production. Between his MS and PhD, he worked as a rangeland consultant technician in Wyoming and Nevada. He received a PhD from New Mexico State University in 2014 where he evaluated livestock grazing behavior and targeted grazing practices in southern New Mexico. Currently, Stephenson's research has focused on better understanding spatial and temporal relationships between vegetation dynamics and precipitation in the Nebraska Sandhills and how this influences cattle grazing behavior and forage availability. Research in the Nebraska Panhandle has focused on better understanding livestock behavior and targeted grazing strategies to better manage cheatgrass within perennial grass/cheatgrass systems. Other research includes strategies to use annual forages for grazing within crop and livestock management systems and on-ranch variability in rangeland health and productivity in the Nebraska Sandhills.



VERN TERRELL

Vern Terrell comes from a diversified farm and ranch he operates with his wife, Marjean, son Brock, and his wife Heidi. Terrell Ranch runs a cow herd to produce terminal cross calves along with a band of ewes to help better utilize the range. Terrell Farms grows corn, seed wheat, edible beans, and forage crops. They have a small feedlot where

Altenburg Super Baldy Ranch, LLC

ASA Member #8973

UPCOMING SALE SCHEDULE

BRED TO BE COWS PRODUCTION SALE

Saturday December 7th, 2019, Fort Collins, CO
80+ Female Lots, Black & Red

ALTENBURG SUPER BALDY BULL SALE

Saturday, March 21st, 2020, Fort Collins, CO
Selling 120 Black and Red Bulls
With Nuts, Butts and Guts!



For More Information and Sale Book, Contact

Altenburg Super Baldy Ranch, LLC



Willie and Sharon Altenburg
970.481.2570 • Fort Collins, CO
willie@rmi.net • www.altenburgsuperbaldy.net



Portable/Customized Cattle and Horse Shelters



**BUILT TO MEET
YOUR NEEDS!**



QUALITY FEATURES

- Constructed with all new materials
- Build on 6" pipe skids with tow hooks
- Self Catching Head Gate
- Tack Room
- 10' & 20' Windbreak Panels
- Your choice of colored metal & trim

**LARSON
METAL**

308-641-5527

www.larsonmetal.com

www.larsonmetal.com
(308)641-5527
larsonmetal@icloud.com

they prepare calves for finishing, Vern attended the University of Nebraska and is a graduate of the Nebraska LEAD program. He has been active in many local, county, and state organizations. Currently, he is involved with the Nebraska Grazing Lands Coalition, Ag Builders of Nebraska, and also serves on the advisory board of the UNL Panhandle Research and Extension Center in Scottsbluff, NE.



DR. BRIAN VANDER LEY

Dr. Brian Vander Ley got his DVM in 2008 and his PhD in 2012 in Veterinary Microbiology and Preventative Medicine, both from Iowa State University. Dr. Vander Ley's

responsibilities include engaging in research and extension outreach activities to benefit livestock producers and veterinarians as well as veterinary student education. His primary interest is to enhance beef cattle production sustainability by improving animal health and performance at all levels of production. His research is focused on bovine respiratory disease, developmental programming, and preventative health measures in beef cattle. Because of his expertise in preventative health measures, Dr. Vander Ley will discuss setting up the newborn calf for success at the Range Beef Cow Symposium.



DR. CAITLIN WILEY

Dr. Caitlin Wiley born and raised in northeast Ohio. Attended undergrad and vet school at Ohio State University. Practiced in western Ohio for 2 years in a mixed animal clinic,

before growing a wild hair and moving to Iowa to complete a residency in Theriogenology and master's program in Reproduction. Currently, on faculty at Iowa State University seeing patients in the clinic or on farm and teaching different levels of vet students. In her spare time she enjoys time with her husband and

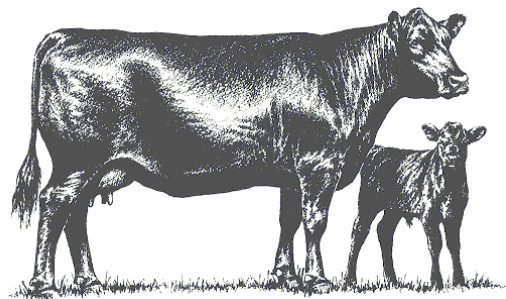
1½ year old daughter fixing up their acreage, playing with their livestock and working with her husband's recip herd.



JACLYN WILSON

Jaclyn is the 5th generation at Wilson Ranch, a commercial cattle operation at Lakeside, Neb. that was founded by her family in 1888. In 2013, she started Flying Diamond

Genetics, headquartered north of Alliance, NE. Along with splitting time between those operations, she has served on the Nebraska Cattlemen's Association board, the Nebraska Agricultural Leadership Council, and ag advisory committees for Sen. Deb Fischer, Rep. Adrian Smith, and Gov. Pete Ricketts, is the current Chair of Resolutions for the National Cattlemen's Beef Association and serves on the Nebraska Humanities Board. She received a 2016 Farm Journal Media 40 under 40 award, and was included in the book *Generations on the Land*. In addition to her work in ranching and the beef industry, she writes weekly editorials for the *Midwest Messenger* that circulates to over 50,000 producers throughout the Midwest. She is also an accomplished artist, working in metals.



Vendor Support

One of the Perks of Range Beef Cow Symposium XXVI

BY KARLA WILKE
Cow/Calf Stocker Specialist University of Nebraska

The benefits of having vendor support at the Range Beef Cow Symposium are many. Have you ever wondered how a two and a half day event, with speakers from all over the country, catered meals, and venue space could be so inexpensive for producers? It is because the vendors who sponsor this event allow the planning committee to offer it to producers at a much-discounted rate.

While the educational piece to this program cannot be overstated, there are distinct advantages to having the opportunity to visit with vendors during the Range Beef Cow Symposium. There are many products, services, and equipment dealers present. Since most cattle producers have limited time to go to town and shop, the vendor booths at this event are the perfect time to do some shopping. *Continued* ➔

GELBVIEH & BALANCER®

Smart. Reliable. Profitable.

Gelbvieh and Balancer® genetics offer more pounds of calf weaned, added fertility, and greater cow herd longevity.



gelbvieh.org

At the time of this writing the Corporate Break Sponsors are:

Schuler Red Angus

7522 Road 74
Bridgeport, NE 69336
www.schulerredangus.com

Merck Animal Health

www.merck-animal-health-usa.com

Zoetis

7873 Goose Egg Circle
Cap Casper, WY 82604
zoetis.com

Farm Credit Services of America

411 Valley View Drive
Scottsbluff, NE 69361
www.fcsamerica.com

Midcontinent Livestock Supplements

www.mlstubs.com

Media Break Sponsor:

The Cattle Business Weekly

185 Center Ave S
Philip, SD 57567
www.cattlebusinessweekly.com

The Media Sponsors are:

Tri-State Livestock News and The Fence Post

1501 5th Ave.,
Belle Fourche, SD 57717
www.Tsln.com

Progressive Cattlemen

238 West Nez Perce
Jerome, ID 83338
www.Progressivecattle.com

BEEF Magazine

Penton Media, Irving TX
Bert Rutherford
www.agriculture.penton.com

Additional Sponsors include:

Multimin, USA

2809 East Harmony #190
Fort Collins, CO 80528
www.multiminusa.com

American Gelbvieh Assn

350 Interlocken Blvd., Suite 200
Broomfield, CO 80021
www.gelbvieh.org
Angela Vesco, Myron Edelman

Cross Five Cattle Coolers

3491 Whitewood Service Road, Ste A
Sturgis, SD 57785
www.crossfivecoolers.com

Lakeside Livestock Equipment

83862 547th Ave.
Battle Creek, NE 68715
www.lakesidelivestock.com

Ritchey Livestock ID

www.ritcheytags.com

Furst-McNess

1096 S 4000 W
Rexburg, ID 83440
www.mcness.com
Bruce Wohlers, Justin Reifschneider

Ridley Block Operations

111 West Cherry Street, Suite 500
Mankato, Minnesota, USA 56001
www.ridleyinc.com

Westco Feed

www.westco.coop

Red Angus Assn of America

18335 E 103rd Ave., Suite 202
Commerce City, CO 80022
www.redangus.org

Anipro/Xtraformance Feeds

4992 Stony Brook
College Station, TX 77845
www.angus.org

Kent Nutrition Central Life Sciences

2905 US Highway 61 N
Muscatine, IA 52761
www.kentnutritiongroup.com

Select Sires

833W 400N
Logan, UT 84321
www.selectsiresbeef.com
Jay Hill, Jerald Raymond, Stuart Rasmussen, Lorna Marshall, Willie Altenburg

NCBA

9110 East Nichols Avenue, Suite 300
Centennial, CO 80112
www.ncba.org

ABS Global

1525 River Rd.
DeForest, Wisconsin, USA 53532
www.absglobal.com

Insure My Forage

PO BOX 31
Norfolk, Nebraska 68702
www.insuremyforage.com

Sustainable Genetics, LLC

www.sustainablegenetics.com

SweetPro Premium Supplements

1505 4th Avenue East
Horton, KS 66439
www.Sweetpro.com

Bayer Animal Health

12809 Shawnee Mission Parkway
Shawnee, KS 66216
www.bayerlivestock.com

Neogen

347 Drifter Drive
Bozeman, MT 59718
www.neogen.com
Jim Gibb, Tyler Gray, Shelby Steele

American Aberdeen Assn.

19590 East Mainstreet #104
Parker, CO 80138
www.americanaberdeen.com

Kerndt Livestock Products
www.kerndtlivestockproducts.com

ST Genetics
15 Grassland Street
Billings, MT 59106
www.stgen.com

Bowman Cattle Company
3410 Road 163
Pine Bluffs, WY 82082
www.bowmancattle.com

Ward Laboratories
4007 Cherry Ave
Kearney, NE 68848
wardlab.com

New Generation Supplements
53 Renegade Road
Riverton, WY 82501
Smartlic.com
Mike Jennings, Craig Kerbs
Laramie Wiginton

Datamars, Inc.
datamars.com

Purina Animal Nutrition
13231 SE 36th Street: Suite 130
Bellevue, WA 98006
www.purinamills.com

AW Laser Art/#W Livestock Equipment
www.awlaserart.com



Don't miss this great opportunity!
Join us **November 18-20** in
Mitchell, NE for RBCS XXVI.

Register today at

beef.unl.edu/range-beef-cow-symposium

ABSOLUTE REAL ESTATE AUCTION

SPEAR S RANCH

MEADE AND BUTTE COUNTIES, MUD BUTTE - NEWELL, SD
31,990+/- ACRES

28,692.83+/- Ac. Deeded + 3,298 Ac Lease

**COMPLETE HEADQUARTERS – EXCELLENT GRASS – PRODUCTIVE TILLABLE
EXTENSIVE PIPELINE SYSTEM – 18.5 MILES OF CREEK BOTTOM
DECEMBER 10, 2019 – 10:30 AM (MT)**

RUSHMORE PLAZA HOLIDAY INN, 505 N HAINES AVE (5TH St), RAPID CITY, SD 57701

VIEWING DATES: OCT. 30-31; NOV. 13-14, 26-27 from 10:00 – 3:00 each day, or by appointment
WATCH UPCOMING ADS FOR FUTURE DATES, (feel free to bring ATV/UTVs)

**THE PROPERTY WILL BE OFFERED IN INDIVIDUAL TRACTS, COMBINATIONS OF TRACTS AND
IN ONE ENTIRE RANCH UNIT;** selling in the manner realizing the greatest return to the Seller.

One of the largest ranch holdings in the Northern Great Plains, the SPEAR S RANCH presents an extremely rare opportunity to acquire a comprehensive and versatile working ranch property with enough scale to make an efficient 1,500 +/- Animal Unit operation. The principals have now decided to make this ranch available for the next legacy to be written.

Hewitt Land Company is pleased to offer the SPEAR S RANCH at Absolute Public Auction

Selling without reserve bid! Have your arrangements made.

Internet bidding available. Broker participation invited (form and deadline required).

*For photos, video, downloadable brochure maps and on-line bidding go to **www.HewittLandCompany.com***



JD Hewitt 605-347-1100
Tyson Hewitt 605-206-0034
Tanner Hewitt 605-490-7952



Market Outlook Hot Topic at RBCS

BY MARIA TIBBETTS



While fed prices have come back since the Tyson fire, there still isn't much optimism in the cow-calf sector as the fall calf market is below a year ago, said Katelyn McCulloch, senior economist and director of the Livestock Marketing Information Center.

The fire at the Tyson plant in Kansas two months before the fall run of spring calves started had cow-calf producers biting their nails as prices fell.

"That fire rattled the cattle market top to bottom," McCulloch said. "There was a short-term loss on the fed side, but heading into 2020 it looks like they'll return to normal pretty efficiently. There's a lot of optimism in the beef market looking into 2020."

She is predicting that heavier feeder calves will be higher than a year ago in 2020, but says not to expect lighter calves to see an increase in prices until the second half of the year.

The USDA reported that corn yields for October aren't as bad as they thought they would be, so corn is priced at just under \$4 a bushel going ahead. Hay and feed costs are reasonably priced, so those factors are friendly to feeder cattle. McCulloch added beef demand and the currentness of the feedlots continues support fed cattle prices, and with the Tyson plant expected to be back online by the end of the year, that's a longer-term positive outlook.

Cow and heifer slaughter has been high relative to a year ago, which indicates expansion is over for the beef cowherd, which will likely put beef cow numbers close to a

PHOTO BY RUTH WEICHMANN

year ago on Jan. 1, 2020. From an international standpoint, African swine fever is having a positive impact on other proteins in Asian markets, especially. "China has a protein deficit," McCulloch said. "But we have this ongoing trade war with China, so how large a benefit the beef market sees may depend on how that plays out. Korea and the Philippines are also looking at buying protein as a result of ASF. Pork is the preferred protein in many of these markets, but since it's getting so expensive in markets that have had disease impact, those consumers are likely to turn to other proteins. Chicken is the next preferred protein, but beef should see some benefit as well."

This year will end with a 1-2 percent drop in beef exports, but McCulloch expects to see that turn into a 3-5 percent increase in 2020, partly because of the African swine fever.

The market outlook presentation at the Range Beef Cow Symposium is always one of the popular sessions. Jim Robb, senior agricultural economist with the Livestock Marketing Information Center offers insight into the market and market outlook.

The LMIC has been around since 1955, providing economic analysis and projections concerning the livestock industry. Staff there works with extension specialists, USDA economists and industry cooperators on research, education and policy evaluation.

Participating Extension services each appoint a member to the Center, and currently 28 Extension services participate in LMIC.

Eight federal partner agencies and 13 associate institutions participate in the LMIC. All members of the center contribute to baseline funding, which provides for staff salaries. Non-members pay subscription and user fees for materials and services. Special projects are supported by funded cooperative agreements with member organizations.

Get your A.I. Class booked!

**In our 38th Year
6495 cattle producers
from 36 states & 8 countries
Trained in A.I. - to date!!**

- Hands on cow practice
- All facets of successful A.I. management
- Semen Handling & Heat Detection
- Nutrition/Synchronization/Diseases/Genetics/Sire Selection

Book early to get your date!

Fall 2019 & Spring 2020 Class Dates:

November 14 - 16	January 30 - February 1	April 20-22
December 14 - 16	March 14-16	June 11 - 13



7 TRIANGLE 7 CATTLE CO., LLC

31065 CR 41,
Akron, CO 80720

Harold & Cheryl Miller
www.7triangle7.com
7triangle7@centurytel.net

970-481-3921
970-554-2010

**Mention this ad when
submitting your
AI Class registration**

HEARTLAND TANKS & SUPPLY



**Free Standing Corral
Panels 5'x24' Well Pipe
Construction**



- Rubber Water Tanks 5 to 13ft
- Insulated Concrete covers (Covers to fit all tank sizes)
- Tanks with steel & concrete bottoms
- Railroad Ties
- Guardrails
- Wildlife escape ramps

- Tire scrapers for feedlots or snow removal.
- Roberts, Hudson & Apex Float Valves

Free tank tops to use for dam banks or wind breaks
605-730-0550 • www.heartlandtanks.com
Full loads can be delivered to your farm or ranch.

RANDY AND JULIE HOLMQUIST
40425 252nd St., Mitchell, SD 57301



Every herd has its lead bull.



Cut. Condition. Rake. Bale. Haul. The M6 does it all with the power of turbocharged diesel. If there is one tractor that dominates the livestock business and gets the job done right, this is it. [Visit us today](http://www.CheyenneKubota.com)

www.CheyenneKubota.com | 307.637.0609

CHEYENNE
Kubota



Kubota
Shape your world.

KubotaUSA.com

© Kubota Tractor Corporation 2019. This material is for descriptive purposes only. Kubota disclaims all representations and warranties, express or implied, or any liability from the use of this material. For complete warranty, safety and product information, consult your local Kubota dealer. For the complete disclaimer, go to KubotaUSA.com/disclaimers and see the posted disclaimer.



**CATTLE INDUSTRY CONVENTION
& NCBA TRADE SHOW**
FEBRUARY 5 - 7, 2020 *San Antonio*
Henry B. González Convention Center **TEXAS**

#CATTLECON20
CONVENTION.NCBA.ORG





Herd Solutions. Delivered.



Now is the time to optimize nutrition and performance. Your local CowBos Dealer delivers cost-effective, labor-saving and high-quality solutions with professional service to make the most of your investment.

970.420.0267

Ault, Colorado



Bovine Reproductive Services

- **AI COURSES**
- **SYNCHRONIZATION & AI**
- **DAIRY HEIFER DEVELOPMENT**
- **CUSTOM FEEDING**
- **BEEF HEIFER DEVELOPMENT**

www.SchleiningGenetics.com

Dallas & Nancy Schleining